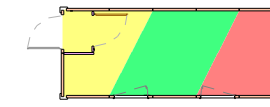
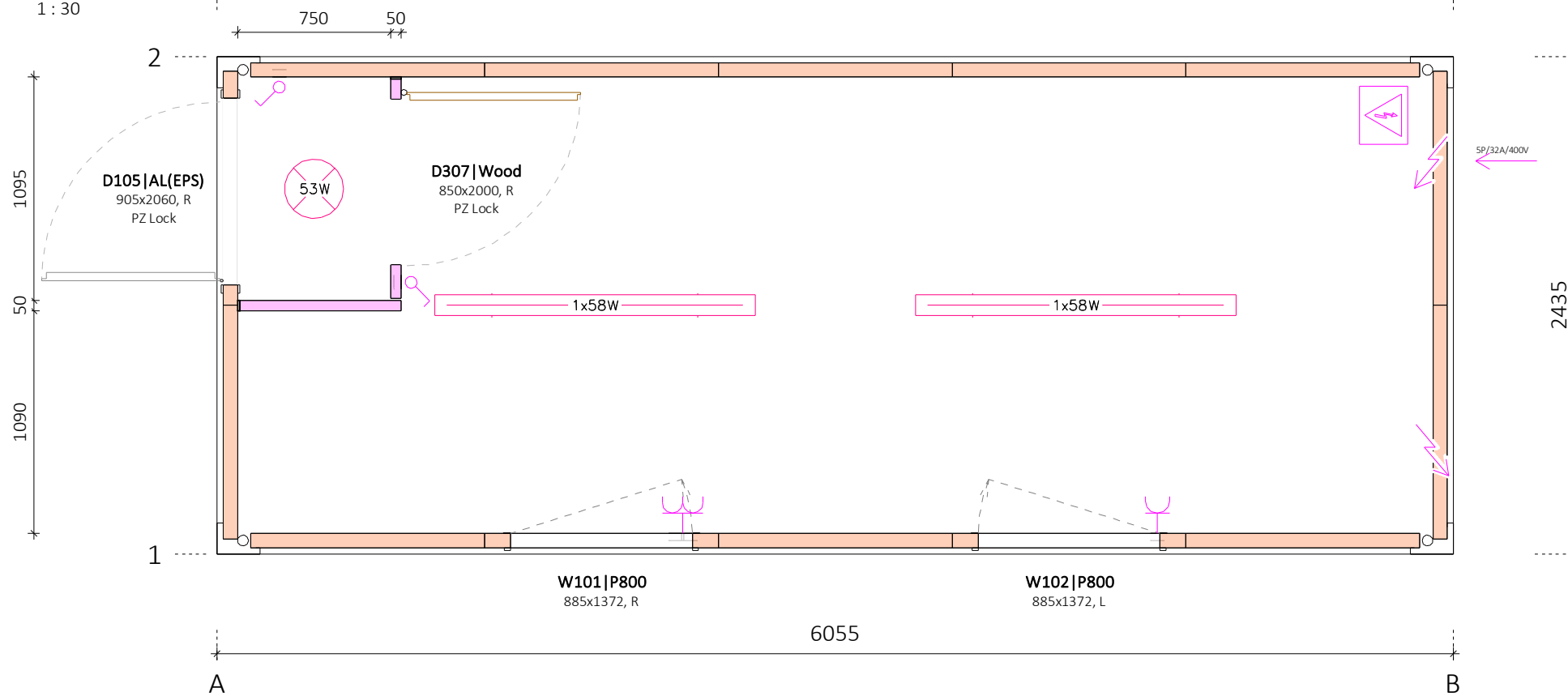
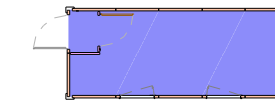


**Floor Plan**  
1 : 30



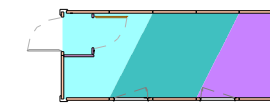
**Floor Board**

- Chipboard
- Plywood (optional)
- Woodcement plate (optional)



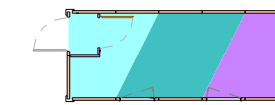
**Floor Finish**

- PVC Gray



**Ceiling Finish**

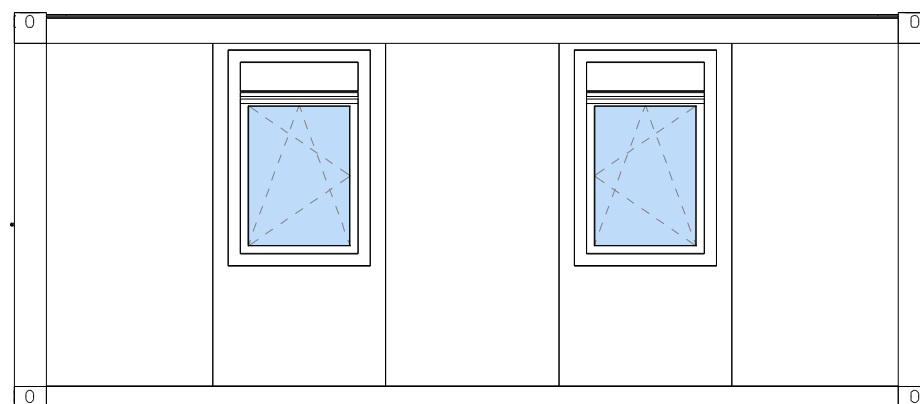
- Chipboard white
- Plasterboard (optional)
- Steel Sheetting (optional)



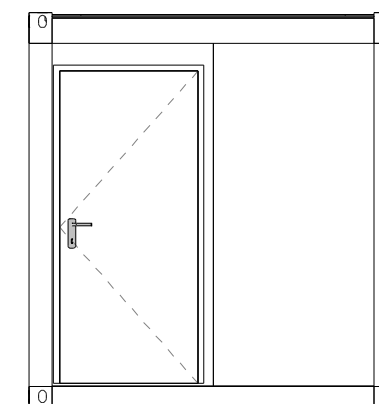
**Interior Wall Finish**

- Chipboard white
- Plasterboard (optional)
- Steel Sheetting (optional)

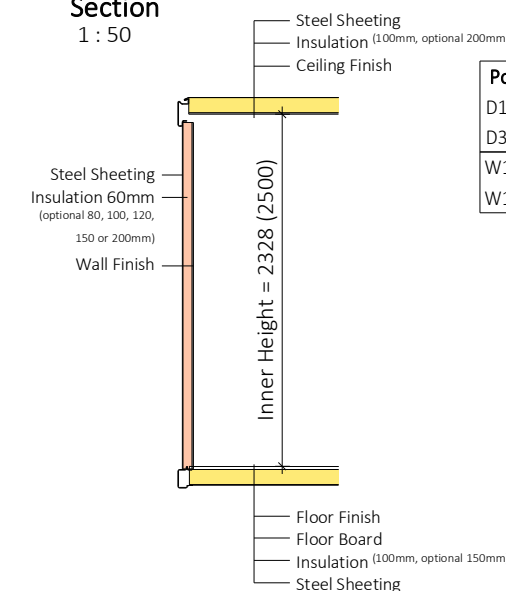
**View Front side**  
1 : 50



**View Left side**  
1 : 50



**Section**  
1 : 50

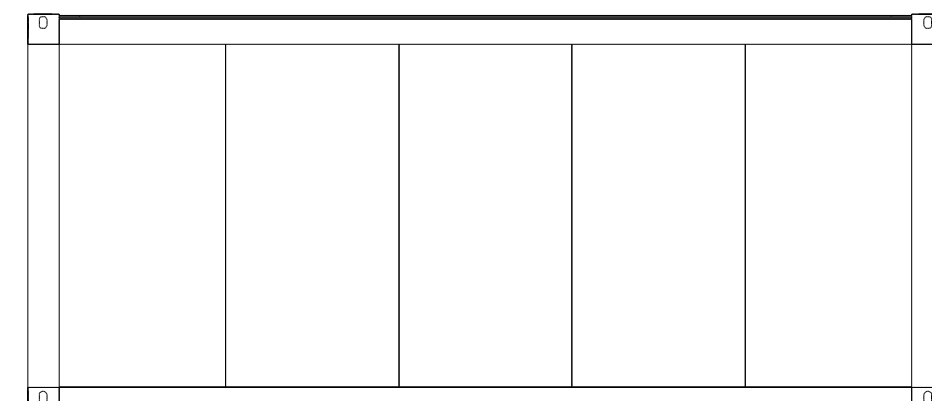


Pos.	Title	NET Dim.	Dim.	Material	Pcs.
D105	Door single AL(EPS), R	805x2000	905x2060	AL	1
D307	Door Leaf Wood, R	810x1990	850x2000	Wood	1
W101	Window, with shutters, R		885x1372	PVC	1
W102	Window, with shutters, L		885x1372	PVC	1

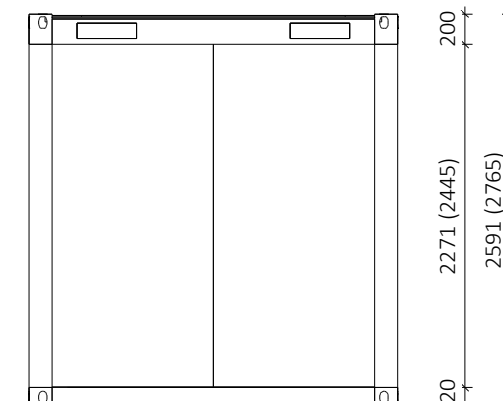
Light type		Pcs.
	Light 1x53W	1
	Fluo light 1x58W	2

Electrical equipment		Pcs.
	Socket Double IP20	1
	Socket IP20	1
	Switch IP20	2

**View Back side**  
1 : 50



**View Right side**  
1 : 50



Panel Type	Insulation	Length [m]	Stk.
FTVL-60 [9002/white]	60mm	16.03	14
SI-50	30mm	1.87	2

**REM d.o.o.**

Labels	/
Plumbing System	/
Electric Type	IEC 60364
Forklift	/
Roof Insulation	100mm
Floor Insulation	100mm
Frame Galvaniz.	/
Frame Colour	RAL 9002
Interior Height	2.3 (2.5)m
Export of CTN	/

Drw. Number: 18-Tip B-1-V1  
Date: 28.08.2018

**NOTE:** For more information please refer to technical description of containers.  
Gross and net dimensions of container can vary, depending on different finish materials, insulation thicknesses etc.

V/Š: 297 / 420 mm |