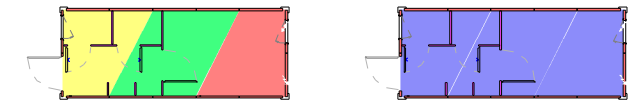
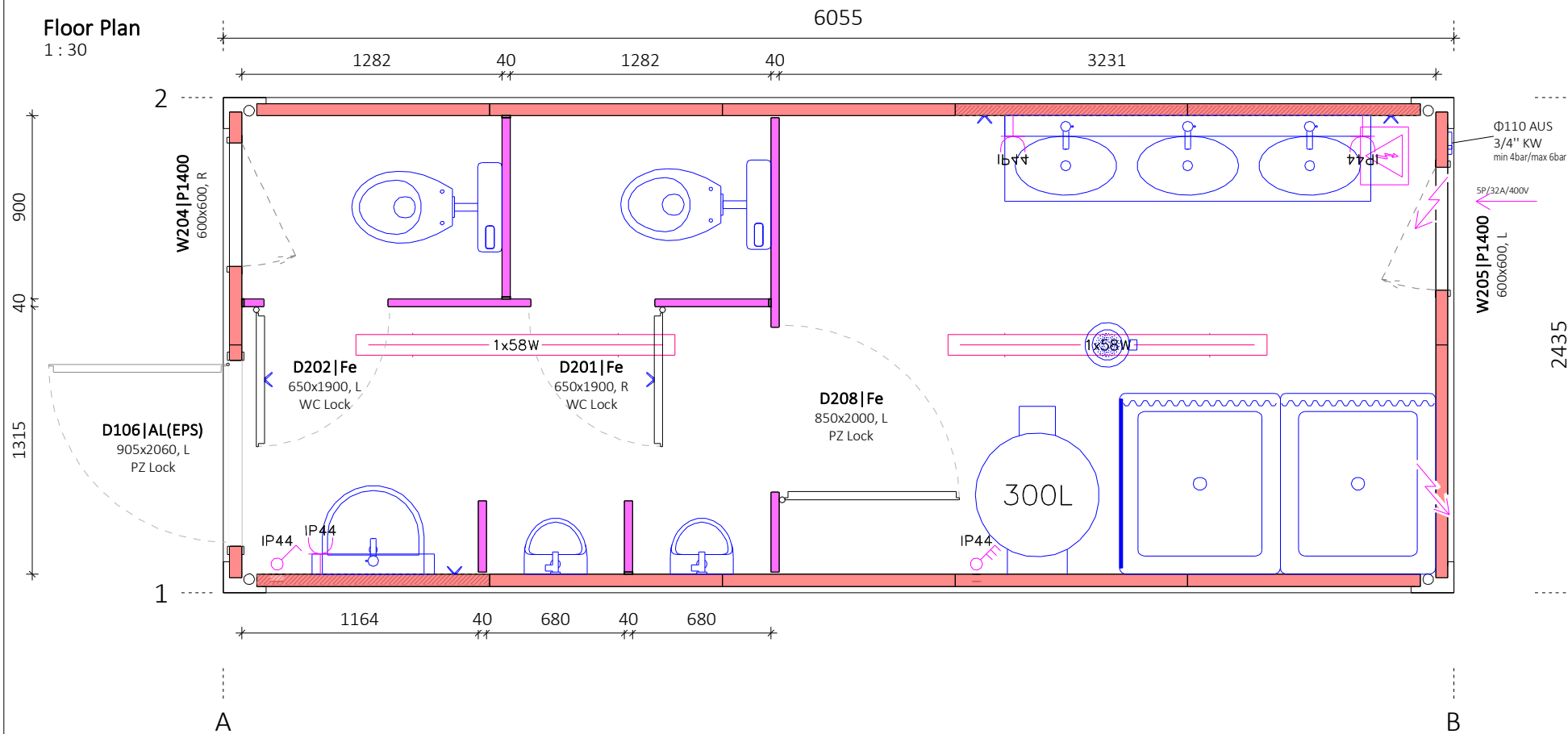


**Floor Plan**  
1 : 30

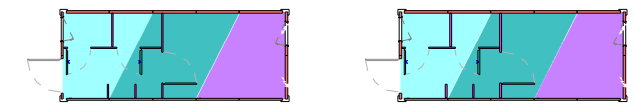


**Floor Board**

- Chipboard (optional)
- Plywood (optional)
- Woodcement plate

**Floor Finish**

- PVC Gray



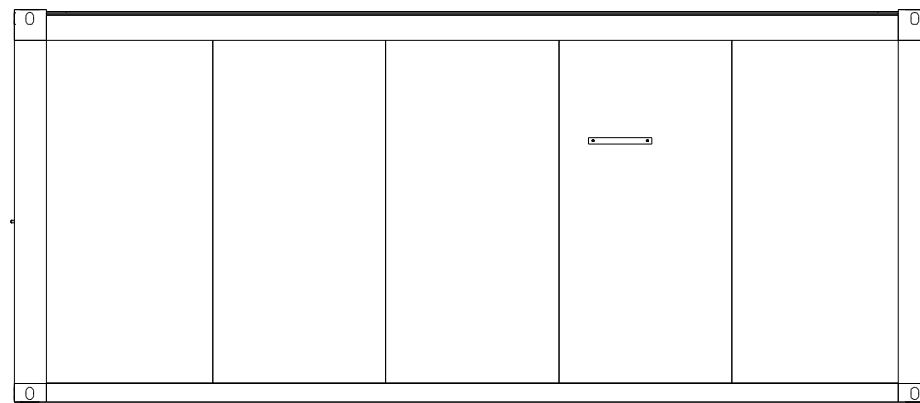
**Ceiling Finish**

- Chipboard white (optional)
- Plasterboard (optional)
- Steel Sheeting

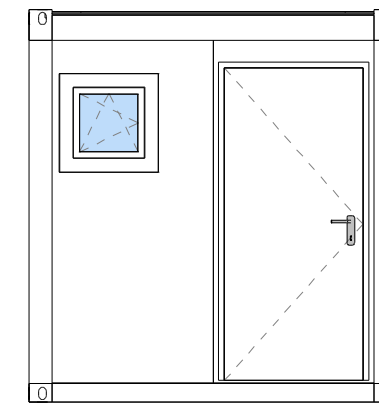
**Interior Wall Finish**

- Chipboard white (optional)
- Plasterboard (optional)
- Steel Sheeting

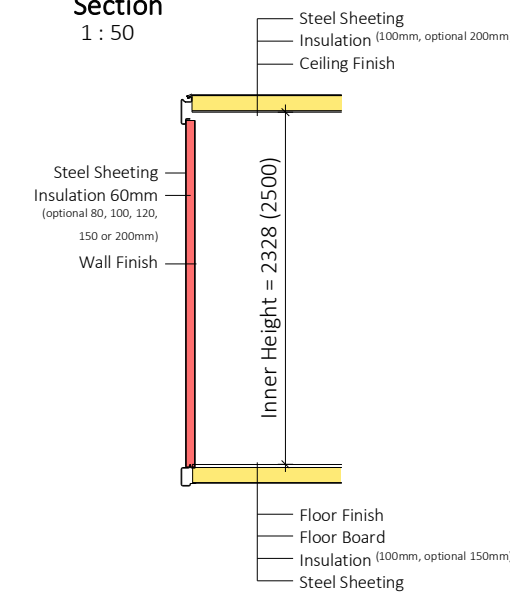
**View Front side**  
1 : 50



**View Left side**  
1 : 50



**Section**  
1 : 50

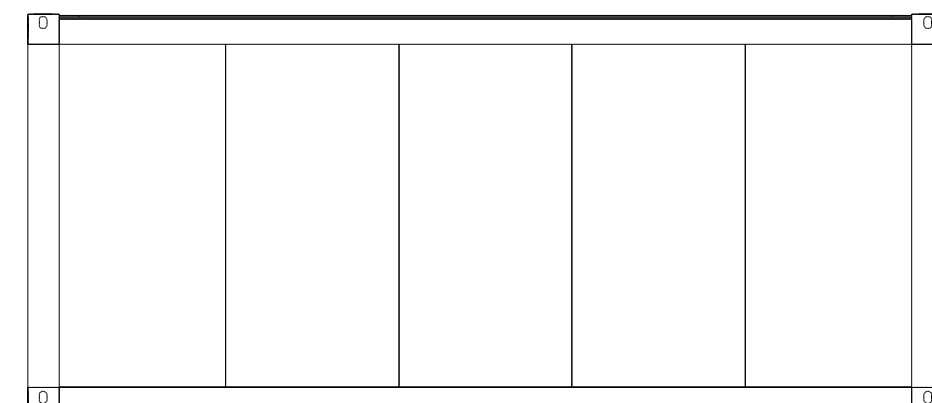


Pos.	Title	NET Dim.	Dim.	Material	Pcs.
D106	Door single AL(EPS), L	805x2000	905x2060	AL	1
D201	Door Leaf Fe, R	610x2080	650x1900	Fe	1
D202	Door Leaf Fe, L	610x2080	650x1900	Fe	1
D208	Door Leaf Fe, L	810x2000	850x2000	Fe	1
W204	Window single, no shutters, R		600x600	PVC	1
W205	Window single, no shutters, L		600x600	PVC	1

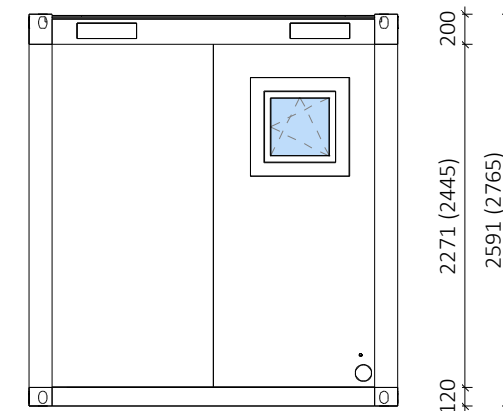
Light type	Pcs.
Fluo light 1x58W	2

Electrical equipment	Pcs.
Switch 3P IP44	1
Socket IP44	3
Switch IP44	1

**View Back side**  
1 : 50



**View Right side**  
1 : 50



Panel Type	Insulation	Length [m]	Stk.
Fe-40	40mm	6.40	5
FTV-60 [9002/white]	60mm	16.03	14

**REM d.o.o.**

Labels	/
Plumbing System	/
Electric Type	IEC 60364
Forklift	/
Roof Insulation	100mm
Floor Insulation	100mm
Frame Galvaniz.	/
Frame Colour	RAL 9002
Interior Height	2.3 (2.5)m
Export of CTN	/

Drw. Number: 18-Tip G-1-V1  
Date: 29.08.2018

**NOTE:** For more information please refer to technical description of containers.  
Gross and net dimensions of container can vary, depending on different finish materials, insulation thicknesses etc.

V/Š: 297 / 420 mm |