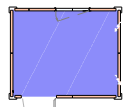


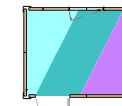
Floor Board

- Chipboard
- Plywood (optional)
- Woodcement plate (optional)



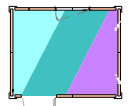
Floor Finish

- PVC Gray



Ceiling Finish

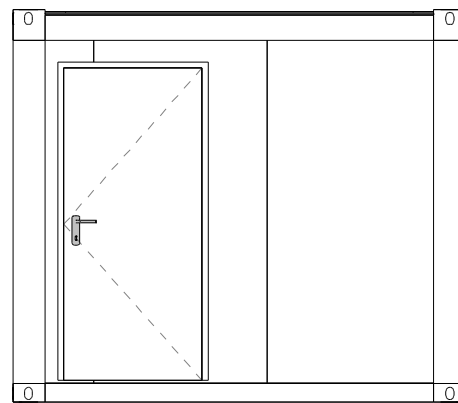
- Chipboard white
- Plasterboard (optional)
- Steel Sheeting (optional)



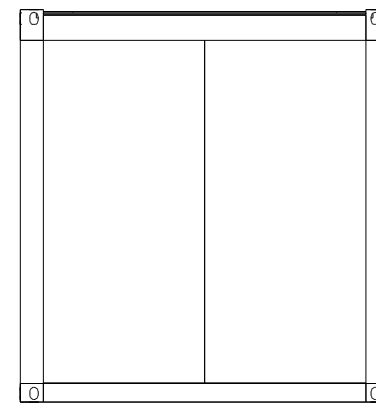
Interior Wall Finish

- Chipboard white
- Plasterboard (optional)
- Steel Sheeting (optional)

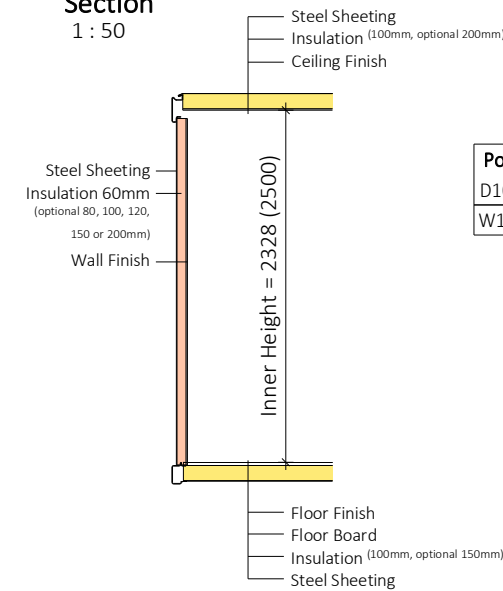
View Front side
1 : 50



View Left side
1 : 50



Section
1 : 50



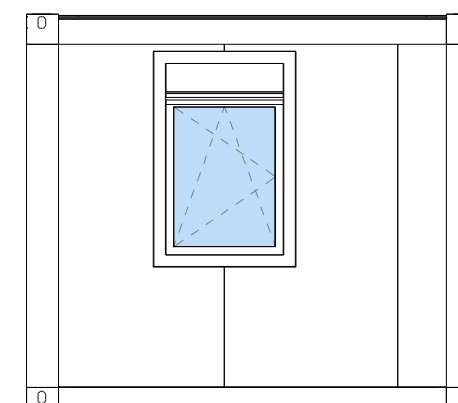
| Pos. | Title | NET Dim. | Dim. | Material | Pcs. |
|------|--------------------------|----------|----------|----------|------|
| D105 | Door single AL(EPS), R | 805x2000 | 905x2060 | AL | 1 |
| W101 | Window, with shutters, R | | 885x1372 | PVC | 1 |

| Light type | Pcs. |
|------------------|------|
| Fluo light 1x58W | 1 |

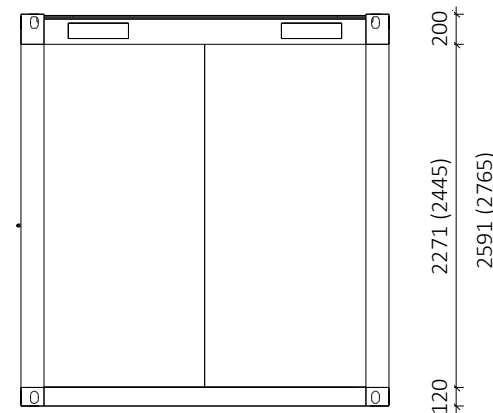
| Electrical equipment | Pcs. |
|----------------------|------|
| Socket Double IP20 | 1 |
| Socket IP20 | 1 |
| Switch IP20 | 1 |

| Panel Type | Insulation | Length [m] | Stk. |
|----------------------|------------|------------|------|
| FTVL-60 [9002/white] | 60mm | 9.90 | 10 |

View Back side
1 : 50



View Right side
1 : 50



NOTE: For more information please refer to technical description of containers.
Gross and net dimensions of container can vary, depending on different finish materials, insulation thicknesses etc.

V/Š: 297 / 420 mm |

REM d.o.o.

| | |
|------------------|------------|
| Labels | / |
| Plumbing System | / |
| Electric Type | IEC 60364 |
| Forklift | / |
| Roof Insulation | 100mm |
| Floor Insulation | 100mm |
| Frame Galvaniz. | / |
| Frame Colour | RAL 9002 |
| Interior Height | 2.3 (2.5)m |
| Export of CTN | / |

Drw. Number: 18-Tip I-1-V1
Date: 29.08.2018