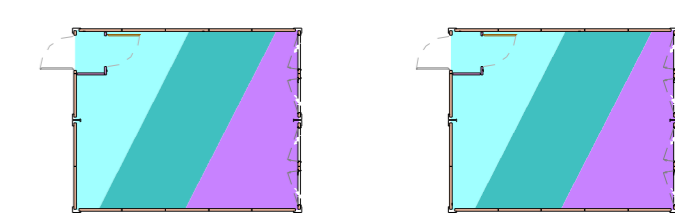
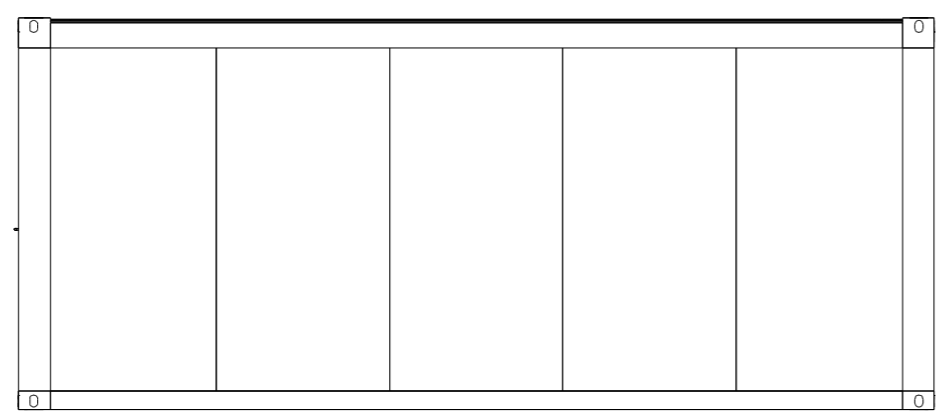


- Floor Board**
- Chipboard
  - Plywood (optional)
  - Woodcement plate (optional)
- Floor Finish**
- PVC Gray

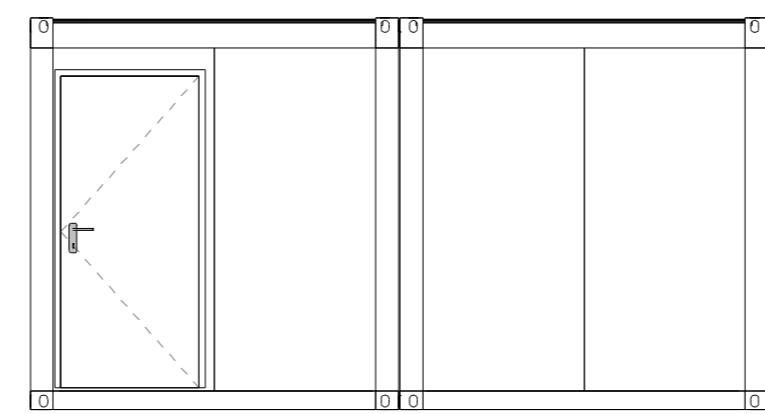


- Ceiling Finish**
- Chipboard white
  - Plasterboard (optional)
  - Steel Sheeting (optional)
- Interior Wall Finish**
- Chipboard white
  - Plasterboard (optional)
  - Steel Sheeting (optional)

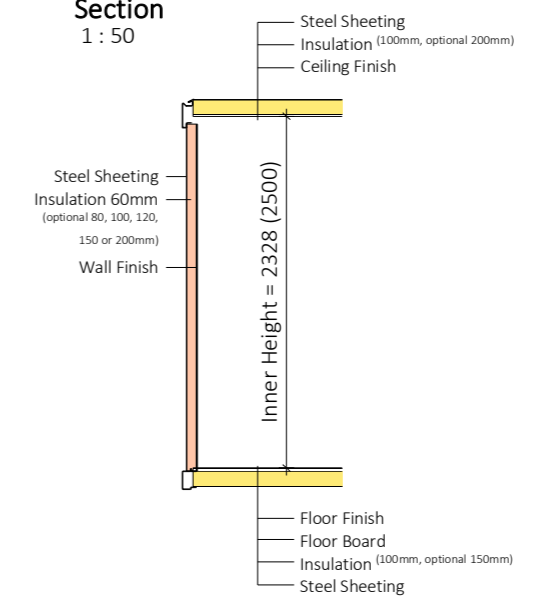
**View Front side**  
1 : 50



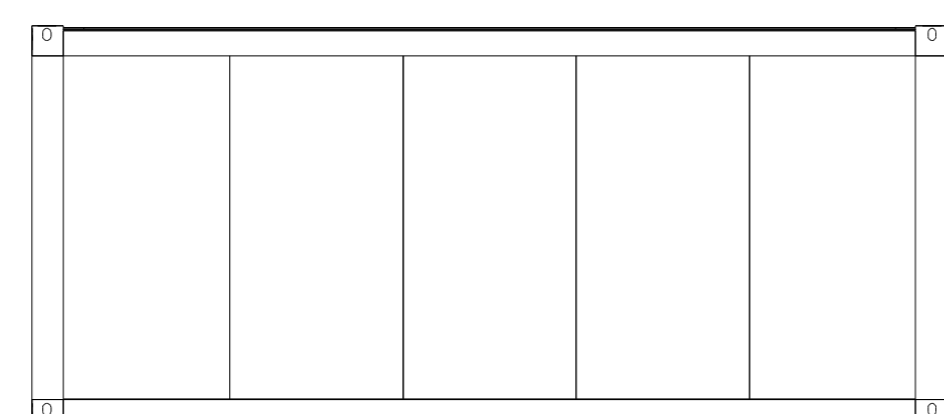
**View Left side**  
1 : 50



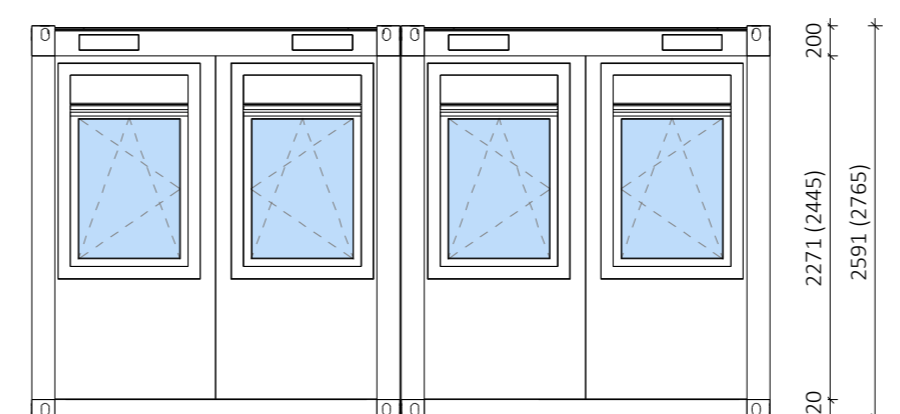
**Section**  
1 : 50



**View Back side**  
1 : 50



**View Right side**  
1 : 50



Pos.	Title	NET Dim.	Dim.	Material	Pcs.
D105	Door single AL(EPS), R	805x2000	905x2060	AL	1
D307	Door Leaf Wood, R	810x1990	850x2000	Wood	1
W101	Window, with shutters, R		885x1372	PVC	2
W102	Window, with shutters, L		885x1372	PVC	2

Light type	Pcs.
Light 1x53W	1
Fluo light 1x58W	4

Electrical equipment	Pcs.
Socket Double IP20	2
Socket IP20	2
Switch IP20	2

Panel Type	Insulation	Length [m]	Stk.
FTVL-60 [9002/white]	60mm	20.61	18
SI-50	30mm	1.87	2

**REM d.o.o.**

Labels	/
Plumbing System	/
Electric Type	IEC 60364
Forklift	/
Roof Insulation	100mm
Floor Insulation	100mm
Frame Galvaniz.	/
Frame Colour	RAL 9002
Interior Height	2.3 (2.5)m
Export of CTN	/

Draw. Number: 18-Tip N-1-V1  
Date: 28.08.2018

**NOTE:** For more information please refer to technical description of containers.  
Gross and net dimensions of container can vary, depending on different finish materials, insulation thicknesses etc.